

WELCOME

About Indiana County Parks & Trails . . .

Indiana County offers one of Pennsylvania's most progressive county park systems. Since 1967 Indiana County citizens have enjoyed an exceptional variety of natural resources at our county parks. County parks offer opportunities to play, relax, improve our health and fitness, and explore the natural world around us. Our parks and trails play an important role in making our county a distinctive and better place to live, work and play.

The park system includes three regional parks, four historic sites, three natural areas, two bicycle trails and four covered bridges. County parks are open year round, providing picnic areas, playgrounds, nature trails, streams, forests, historic sites, and fishing areas for your enjoyment. Park visitors appreciate the wide variety of recreation opportunities provided for their enjoyment.

Choose from a variety of recreational possibilities. Hiking at Pine Ridge Park, bicycling on the Ghost Town Trail, or fishing in the natural setting of Hemlock Lake are just a few of the many opportunities that are available. We invite you to visit these special places.

Our mission is:

- to provide a park system that is responsive and directed by the needs of the people of Indiana County;
- to preserve, protect and enhance county park lands to improve the health of our people and the environmental health of our county;
- to invite and encourage individuals, families, schools, businesses and organizations to become partners in our efforts to invigorate and sustain the county's natural resources for future generations.
- to advance our local economy in a sustainable manner.

Indiana County Parks & Trails
1128 Blue Spruce Road
Indiana, PA 15701



Guide to INDIANA COUNTY PARKS & TRAILS



Parks & Trails

INDIANA COUNTY, PA

www.indianacountyparks.org

Indiana County Parks & Trails Rental Rates

Blue Spruce Park	
Pavilion #1 (capacity 250) Fri/Sat/Sun/Holiday	\$170.00
Entire pavilion	\$120.00
1/2 pavilion (125 people)	\$120.00
Weekday	\$90.00
Entire pavilion	\$65.00
1/2 pavilion	\$65.00
Pavilion #2 (capacity 40) Fri/Sat/Sun/Holiday	\$80.00
Weekday	\$45.00
Pavilion #3 (capacity 75) Fri/Sat/Sun/Holiday	\$100.00
Weekday	\$60.00
Pavilion #4 (capacity 50) Fri/Sat/Sun/Holiday	\$90.00
Weekday	\$55.00
Blue Spruce Lodge (capacity 100)	
Fri/Sat/Sun/Holiday	\$170.00
Weekday	\$100.00
Damage/cleaning deposit for graduations/weddings	\$200.00
Lakeside Center (capacity 50)	
Fri/Sat/Sun/Holiday	\$170.00
Weekday	\$100.00
Damage/cleaning deposit for graduations/weddings	\$200.00
Gazebo	
Any day	\$60.00
Pine Ridge Park	
Pine Lodge (capacity 150, 75 each floor)	
Fri/Sat/Sun/Holiday	\$170.00
Weekday	\$100.00
Damage/cleaning deposit for graduations/weddings	\$200.00
Tom's Run Pavilion #1 (capacity 40)	
Fri/Sat/Sun/Holiday	\$80.00
Weekday	\$45.00
Tom's Run Pavilion #2 (capacity 85)	
Fri/Sat/Sun/Holiday	\$110.00
Weekday	\$65.00
Tom's Run Pavilion #3 (capacity 24)	
Fri/Sat/Sun/Holiday	\$25.00
Weekday	\$15.00

Ghost Town Trail	
Dilltown Pavilion (capacity 75) First-Come First-Served	
Hemlock Lake	
East Shore Pavilion (capacity 50) West Shore Pavilion (capacity 40) First-Come First-Served	

Waterworks Conservation Area
Pavilion (capacity 50)
First-Come First-Served

Rates Subject To Change

PARK & TRAIL FACILITIES

	650	660	205	2	100	16	4	719	48	50	5		10	33	5
Alcoholic beverages prohibited. Fires allowed only in grills or fire rings. Swimming is not permitted in park lakes or streams. Observe a reduced and safe driving speed at all times. Hunting permitted only in designated areas. Deposit all litter and refuse in proper containers. Observe park hours where posted. Respect the rights and privacy of others.	▲				▲										
BLUE SPRUCE PARK															
PINE RIDGE PARK															
HEMLOCK LAKE															
MEMORIAL PARK	▲														
GHOST TOWN TRAIL				▲											
TUNNELVIEW HISTORIC SITE					▲										
ELIZA FURNACE															
BLACKLICK VALLEY								▲							
BUTTERMILK FALLS									▲						
HOODLEBUG TRAIL										▲					
BUENA VISTA FURNACE											▲				
COVERED BRIDGES															
WATERWORKS													▲		
OLD SMICKSBURG PARK														▲	
BLAIRSVILLE RIVERFRONT TRAIL															▲
Amphitheater	▲														
Bicycle Trail					▲										
Charcoal Grills	▲	▲	▲						▲						
Children's Playground	▲	▲													
Comfort Stations	▲	▲	▲		▲				▲				▲	▲	
Cross Country Skiing	▲	▲	▲		▲					▲				▲	▲
Fishing	▲	▲	▲			▲								▲	▲
Handicap Accessibility	▲	▲	▲		▲				▲				▲	▲	▲
Hiking Trails	▲	▲			▲									▲	▲
Horseshoe Courts	▲	▲													
Lodge Facilities	▲	▲													
Nature Programs	▲	▲	▲					▲						▲	▲
Picnic Pavilions	▲	▲	▲		▲			▲	▲	▲			▲	▲	
Picnic Tables	▲	▲	▲		▲			▲	▲	▲			▲	▲	
Sledding, Tobogganing	▲			▲											
Softball Field	▲														
Volleyball Court	▲	▲													

Reservation Information: 724/463-8636
or online at: www.indianacountyparks.org

Blacklick Valley Natural Area

The Blacklick Valley Natural Area (BVNA) is adjacent to the Ghost Town Trail, one-half mile east of Dilltown. The 719-acre property is left in its natural state so that visitors may enjoy the wide variety of habitats, wildlife, and songbirds that inhabit the site. A trail system for hikers has been established in the southern portion of the BVNA, known as the Parker Tract. The property was donated to Indiana County Parks & Trails by Mr. and Mrs. David Russell to preserve and protect the flora, fauna and conservation values of the Blacklick Valley.

Blairsville Riverfront Trail

The 1.7 mile long trail follows the loop of the Conemaugh River around Blairsville. The trail is located within the flood control area of Conemaugh Dam and is subject to periodic flooding. Conemaugh Dam is located seven miles downstream of the trail. Before the property was condemned for flood control purposes this area was an important residential and industrial area of Blairsville and southern Indiana County.

Blue Spruce Park

Located six miles north of Indiana along PA Route 110, this 650-acre park features a 12-acre lake stocked with trout. Pavilion rentals and two indoor lodges are popular for group gatherings.

Other attractions at the park include horseshoe courts, volleyball courts, areas for games and sports, and a children's playground. A series of hiking trails provides over six miles of hiking and cross-country skiing opportunities. Outdoor education programs are provided here and at other county parks by the "Friends of the Parks" support group.

Buena Vista Furnace

The Buena Vista Furnace Historic Site is located in Brush Valley Township adjacent to the Ghost Town Trail. Built in 1847, and operating off and on until 1856, the Buena Vista Furnace was named for the Mexican War battle of February 1847. The thirty-foot high furnace used local iron ore, limestone and charcoal to produce approximately 400 tons of pig iron per year. The Historical Society of Indiana County leases the site to Indiana County Parks & Trails. The site is located three miles east of the Heshbon Access Area (PA Route 259) on the Ghost Town Trail.

Buttermilk Falls

Buttermilk Falls Natural Area is located in West Wheatfield Township, two miles south of Route 22 at Clyde. The site features an impressive waterfall and scenic woodland. The property was donated to Indiana County Parks & Trails by the Keystone-Conemaugh Group, a consortium of nine utility companies that operate the nearby Conemaugh Power Station. Mr. Fred Rogers of children's television fame made many visits to Buttermilk Falls as a child along with his grandfather, Mr. Fred McFetey, who owned the property at one time. Hiking trails allow visitors to explore the natural features of this site.

Covered Bridges

There are four remaining covered bridges in Indiana County. Harmon and Trusal Bridges are located near Willer, off Five Points Road. Kinnersburg Bridge is located west of Tanoma, near Rt. 119. Thomas Bridge is located east of Shelocta, on Thomas Covered Bridge Road. It is the only covered bridge in our County remaining open to traffic. More extensive information about our covered bridges can be found on our website.

Eliza Furnace

The Eliza Furnace Historic Site is located on the Ghost Town Trail at the Indiana/Cambria County line in Vintondale. The Eliza Furnace is a National Register site regarded as one of Pennsylvania's best preserved iron furnaces. Dating from 1846, the furnace is one of few furnaces in the country that still retains its original heat exchanger piping. The furnace is leased to Indiana County Parks & Trails by the Cambria County Historical Society. A comfort station near the furnace provides a restroom and picnic tables for visitors.

Ghost Town Trail

In 1991 the Kowalchick Salvage Company donated an abandoned railroad line, formerly known as the Blacklick and Ebensburg Railroad, to Indiana County Parks & Trails. The railroad corridor has been recycled into a trails to trails project known as the Ghost Town Trail. Totalling 36 miles in Indiana and Cambria County, the trail offers hiking, biking, and cross-country skiing in the Blacklick Creek Valley.

The trail derives its name from eight thriving mining towns that were abandoned in the 1900s. The trail passes through State Gamehands #79 and #276. The endpoints of the trail are at Saylor Park in Black Lick (near Route 119) and in Ebensburg (near Route 22).

Hemlock Lake

Hemlock Lake is a 205-acre park featuring a 60-acre lake. This scenic park is leased to Indiana County by the Pennsylvania Fish & Boat Commission and is located in northeast Indiana County near the village of Johnsonburg along Route 336.

Electric motors and hand propelled boats are permitted. Fishermen may moor their boats at the park according to PA Fish & Boat Commission regulations. Hemlock Lake also features areas for picnicking, nature study, photography, hunting, hiking and ice fishing.

Hoodlebug Trail

The Hoodlebug Trail is a 10-mile non-motorized recreation and commuter trail. The trail follows the abandoned Pennsylvania Railroad corridor between Indiana and Blacklick. "Hoodlebug" was the nickname given to the self-propelled passenger coach that ran on the line until 1940.

The trail combines transportation alternatives, recreation opportunities, heritage preservation, and economic development in Indiana County's most densely populated area.

Memorial Park

Although the smallest of the county parks, Memorial Park is one of the most historic sites within Indiana County. Originally surveyed in 1774, the park was once a church cemetery. During the Civil War the cemetery served as a hiding spot for travellers of the underground railroad.

The doughboy statue in the park was erected in 1923 by a group of citizens lead by Alex Stewart, father of actor James Stewart.

Old Smicksburg Park

Old Smicksburg Park is a 33-acre park located in Smicksburg Borough, in northern Indiana County. The park is located on property leased from the U.S. Army Corps of Engineers, as part of the Mahoning Dam flood control area. The Mahoning Dam is located approximately 11-miles downstream of the park.

Until the early 1940s the property was part of Smicksburg Borough. Since its establishment in 1827 Smicksburg has undergone significant changes. The park provides an opportunity to preserve the history of Smicksburg, interpret life of an early American village and provide a nature and historic-oriented park in northwestern Indiana County.

The park offers trails that are suited to hiking, birding and wildflower study. The nearby Little Mahoning provides a location to launch a canoe or kayak.

Pine Ridge Park

Pine Ridge is a 660-acre park located on old Route 22 near the Chestnut Ridge Inn, three miles east of Blairsville. The park remains in a natural state with large stands of woodland intersected by Tom's Run, a mountain stream.

Situated along Tom's Run are picnic tables and grills, a children's playground, hiking trails and three large group pavilions.

In the southern portion of the park is Pine Lodge. This scenic lodge is available for group rental and is used for reunions, meetings, weddings, receptions and other social gatherings. Pine Lodge contains a kitchen, restrooms, activity rooms and two large stone fireplaces. A two-acre pond nearby adds to the beauty of Indiana County's most scenic lodge.

Tunnelview Historic Site

This 16-acre site, adjacent to Conemaugh Dam in southwest Indiana County, contains nationally significant remnants of transportation history, including a 900' section of the PA Mainline Canal. The nearby Conemaugh River Lake, operated by the U.S. Army Corps of Engineers, features a picnic area, playground and office at the entrance to the historic site.

Waterworks Conservation Area

The Waterworks Conservation Area is a 10-acre site located adjacent to Two Lick Creek, approximately 3 miles south of Indiana, Pennsylvania. The site was donated to Indiana County by Consol Energy. The Waterworks Conservation Area combines recreational opportunities with an environmental remediation project. These remediation efforts include an acid mine drainage (AMD) treatment facility and the construction of an artificial wetland.

For Additional Information, contact:

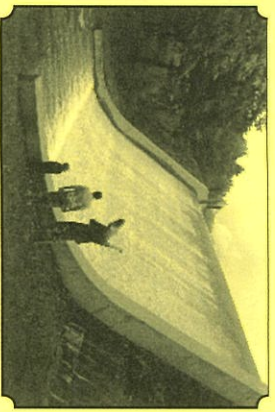
Indiana County Parks & Trails
1128 Blue Spruce Road
Indiana, PA 15701
Phone: (724) 463-8636
Fax: (724) 463-8740
E-mail: indparks@gmail.com
Website: www.indianacountyparks.org

Telephone:

Park Office (all reservations) (724) 463-8636

Other Numbers:

Yellow Creek State Park (724) 357-7913
Conemaugh River Lake
(Army Corps of Engineers) (724) 459-7240
Emergency 911



Cummings Dam at Blue Spruce Park



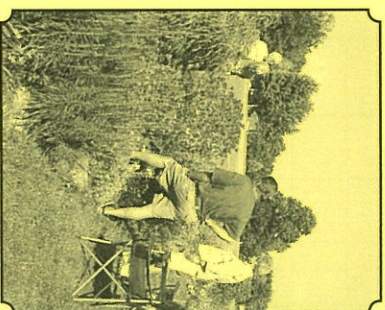
Hoodlebug Trail



Trillium in bloom



WATERWORKS LAUNCH



Blue Spruce Gardens



Buttermilk Falls

