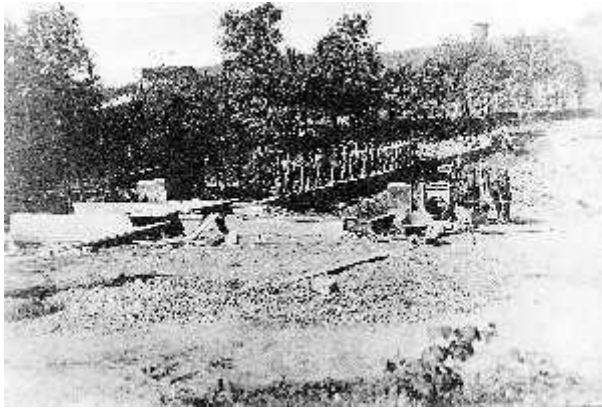


CUMMINGS DAM – 1908 TO THE PRESENT



THIS PHOTO SHOWS WORKERS DURING THE ORIGINAL CONSTRUCTION OF CUMMINGS DAM IN 1908.

THE BUFFALO, ROCHESTER & PITTSBURGH RAILROAD CONSTRUCTED THE DAM TO SUPPLY WATER FOR THE BR&P STEAM ENGINES. A WATER SUPPLY PIPE RAN UNDERGROUND FROM THE DAM TO THE NEARBY CUMMINGS RAILROAD YARD. THERE WERE 12 HOUSES ON THE SITE THAT SERVED AS HOMES FOR THE RAILROAD WORKERS.

THE DAM WAS ENLARGED TO ITS PRESENT SIZE IN 1912. IN 1966 INDIANA COUNTY BEGAN CONSTRUCTION OF BLUE SPRUCE COUNTY PARK.

IN 2007-08 THE ORIGINAL GATE VALVES OF THE DAM WERE REPLACED AND ADDITIONAL CONCRETE REPAIRS WERE MADE.

SINCE ITS EARLIEST TIMES AREA RESIDENTS HAVE USED THE DAM AS A POPULAR LOCAL RECREATION SITE.

CUMMINGS OR CUMMINS?

THE DAM HAS BEEN KNOWN LOCALLY AS BOTH CUMMINS AND CUMMINGS (WITH A 'G') DAM FOR MANY YEARS. AN EARLY LANDOWNER OF THE PROPERTY WAS A.E. CUMMINS, ALTHOUGH HIS NAME IS SPELLED WITH AND WITHOUT A 'G' IN SEVERAL DIFFERENT SOURCES.

THE SUGAR MAPLE GROVE

JUST DOWNSTREAM OF THE DAM IS A SUGAR MAPLE GROVE PLANT BY WALTER LEWIS, A WATCHMAN EMPLOYED AT CUMMINGS DAM BY THE RAILROAD DURING WORLD WAR II.

THERE WAS CONCERN DURING THE WAR THAT THE DAM, ALONG WITH MANY OTHER INDUSTRIAL SITES IN WESTERN PA, COULD BE BLOWN UP BY TERRORISTS. NIGHT WATCHMEN WERE EMPLOYED AT SITES THROUGHOUT WESTERN PENNSYLVANIA BECAUSE THIS WAS AN IMPORTANT INDUSTRIAL REGION DURING THE WAR SUPPLYING COAL, STEEL AND INDUSTRIAL PRODUCTS FOR THE WAR EFFORT.