

THOMAS BRIDGE



Year Built: 1879 (rebuilt in 1998)
Truss type: Town Lattice
Length: 75 feet
Builder: Amos Thomas
Stream: Crooked Creek
Number: PA-32-02

280 Thomas Covered Bridge Road, Indiana, PA 15701

The Thomas Bridge was completely reconstructed in 1998 at a cost of slightly more than \$1 million. Amos Thomas built the original bridge at a cost of \$545; it is the longest of the Indiana County covered bridges. The Thomas Bridge crosses over Crooked Creek near Yarnick's Farm Market. The bridge was also known as Thomas Ford Bridge; prior to the construction of the bridge there was a fording stream crossing in this location. When the railroad was constructed in this area in the early 1900's the bridge was also known as Thomas Station Bridge.

DRIVING DIRECTIONS

All four bridges are within easy driving distance of one another. A driving tour map is located on our website:

www.indianacountyparks.org/bridges/bridges.html

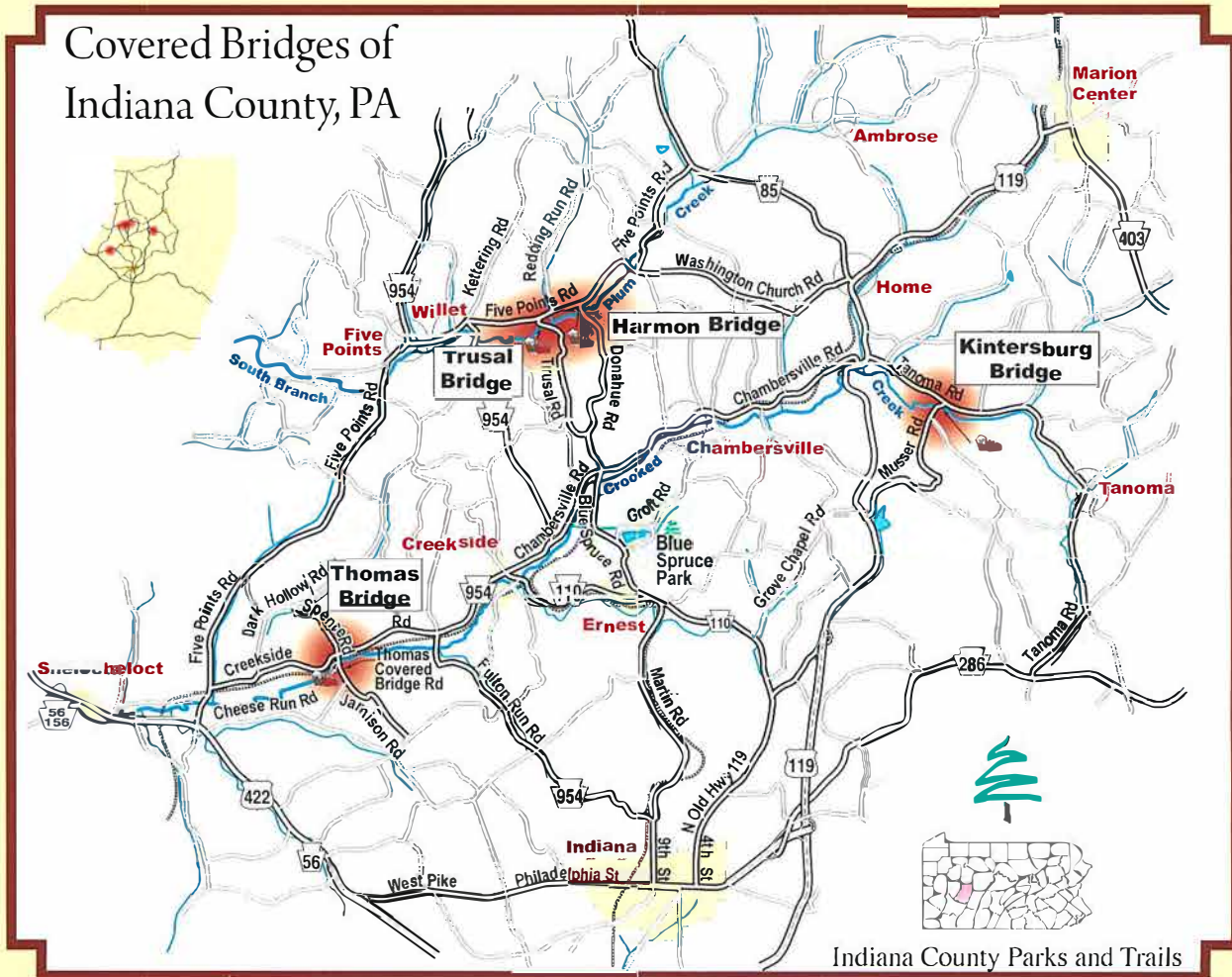
KINTERSBURG BRIDGE



Year Built: 1877
Truss type: Howe
Length: 68 feet
Builder: J.S. Fleming
Stream: Crooked Creek
Number: PA-32-05

2730 Musser Road, Indiana, PA 15701

Kintersburg Bridge was named by Isaac Kinter, in honor of his father, John Kinter a Revolutionary War Veteran. J.S. Fleming erected the bridge over Crooked Creek at a cost of \$893. The Kintersburg Bridge is the only Howe truss bridge in Indiana County and one of only five Howe truss bridges remaining in the state of Pennsylvania.



Indiana County Parks and Trails

TRUSAL BRIDGE



Year Built: 1870
Truss type: Town Lattice
Length: 41 feet
Builder: Unknown
Stream: South Branch of Plum Creek
Number: PA-32-03

1961 Trusal Road, Creekside, PA 15732

Trusal Bridge (also known as Dice's Bridge) is the oldest of Indiana County's covered bridges. At 41 feet the Trusal Bridge is the shortest of Indiana County's covered bridges. It was named after Robert Trusal a nearby property owner. Trusal Bridge is located about one-half mile downstream of the Harmon Bridge.



HARMON BRIDGE



Harmon Bridge and Trusal Bridge are companion bridges located on the South Branch of Plum Creek just off Five Points Road. Both the Harmon and Trusal bridges are constructed with town lattice trusses. The bridges are located in a very picturesque farm setting.

Year Built: 1910
Truss type: Town Lattice
Length: 45 feet
Builder: John R. Carnahan
Stream: South Branch of Plum Creek
Number: PA-32-04

2725 Donahue Road, Creekside, PA 15732

Harmon Bridge was named after Civil War veteran J. S. Harmon. This bridge was constructed in 1910 under contract with the County Engineer at a cost of \$525.

For additional information:

Indiana County Parks & Trails
1128 Blue Spruce Rd.
Indiana, PA 15701
Phone: (724) 463-8636
www.indianacountyparks.org



Covered Bridges of Indiana County



“Easy and safe passage over the waters of the United States are much wanted.”

- Charles Wilson Peale, An Essay on Building Wooden Bridges, 1797

Indiana County is home to four covered bridges constructed in the late 1800's and early 1900's. The four bridges are Harmon, Trusal, Kintersburg and Thomas. The Thomas Covered Bridge is the only covered bridge in Indiana County that remains open to traffic. All four covered bridges are listed on the National Register of Historic Places. Indiana County is committed to ensuring that the covered bridges are maintained for future generations to enjoy and appreciate.